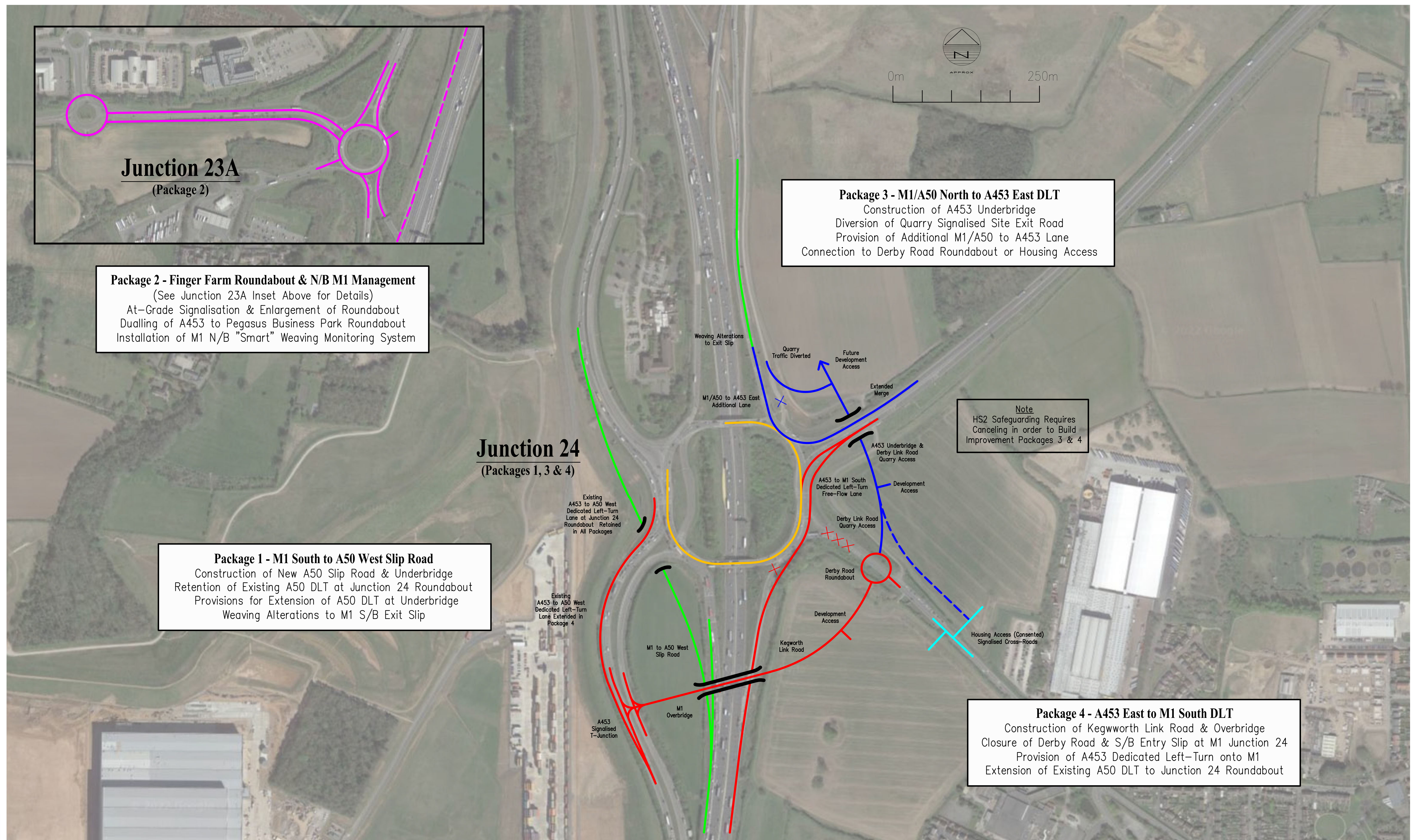


M1 Junctions 23A and 24 strategic scheme

Segro have worked with other developers/landowners of development sites in the area to identify a strategic scheme for M1 Junctions 23A/24 which will resolve existing problems at the junctions and accommodate natural and planned growth.

Different packages of works have been identified which can be independently delivered by the developments to which they are linked but which, together, will provide a comprehensive scheme.

The works to be delivered by Segro are shown coloured green (apart from the underbridge being replaced by an overbridge) and will fully mitigate the impact of the EMG2 development on J23A and J24.



M1 Junction 23A & 24 Improvements Improvement Packages 1 to 4



segro.com/slpemg2

Illustrative Views



Indicative CGI Images



segro.com/slpemg2