

# SEGRO CENTRE DAGENHAM

ORION PARK, MESSINA WAY, RM9 6FF  
📍 ///IMAGE.SHOVELS.STACK

---

AVAILABLE Q2 2025  
REFURBISHED CROSS-DOCKED  
INDUSTRIAL & LOGISTICS UNIT

---

65,040 SQ FT (6,042 SQ M)  
6.5 ACREAGE



[SEGRO.COM/CENTREDAGENHAM](https://www.segro.com/centredagenham)

**SEGRO**



# OVERVIEW

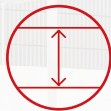
The ideal solution for logistics and distribution, SEGRO Centre Dagenham provides 65,040 sq ft (6,042 sq m) of detached cross-dock warehouse space on a c.6.55-acre site.

Undergoing extensive refurbishment, the unit is equipped with 36 dock-level loading doors and a generous spacious yard, specifically designed to support high-volume logistics operations efficiently.

# SPECIFICATION



**36 DOCK LEVEL  
LOADING DOORS**



**44 TO 122M  
YARD DEPTH**



**3 LEVEL ACCESS  
LOADING DOORS**



**PHOTOVOLTAIC  
PANELS**



**13.3M EAVES  
HEIGHT**



**TARGETING  
EPC A+**



**60 KN/M<sup>2</sup>  
FLOOR LOADING**



**61 HGV  
PARKING SPACES**



**FULLY FITTED  
OFFICES**



**56 PARKING SPACES WITH  
16 EV CHARGING POINTS**

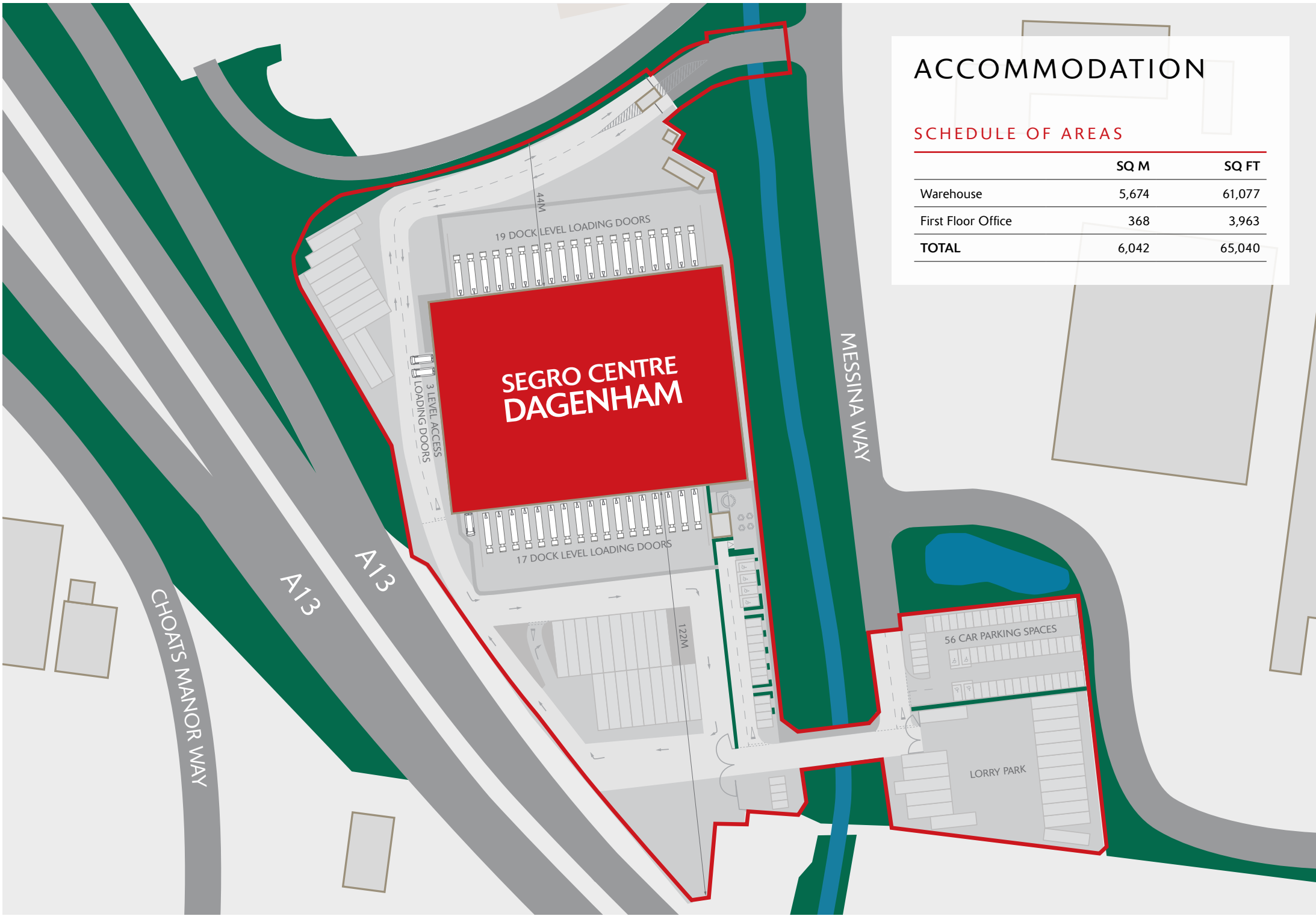


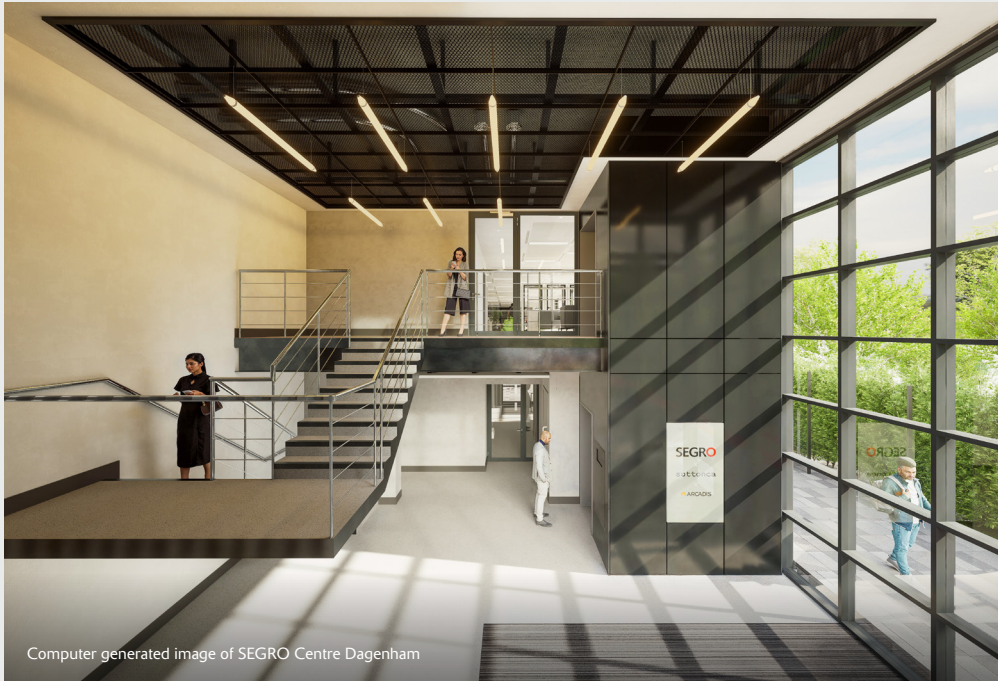


# ACCOMMODATION

## SCHEDULE OF AREAS

	SQ M	SQ FT
Warehouse	5,674	61,077
First Floor Office	368	3,963
<b>TOTAL</b>	<b>6,042</b>	<b>65,040</b>





Computer generated image of SEGRO Centre Dagenham

Aerial showing cross dock and yard at SEGRO Centre Dagenham



Located on the established Orion Park which is situated adjacent to the A13 dual carriageway and accessed via the A1306.



Excellent road link with the A13 dual carriageway offering swift access to the A406 (North Circular road), Docklands and the City to the west. Junction 31 of the M25 motorway to the east.



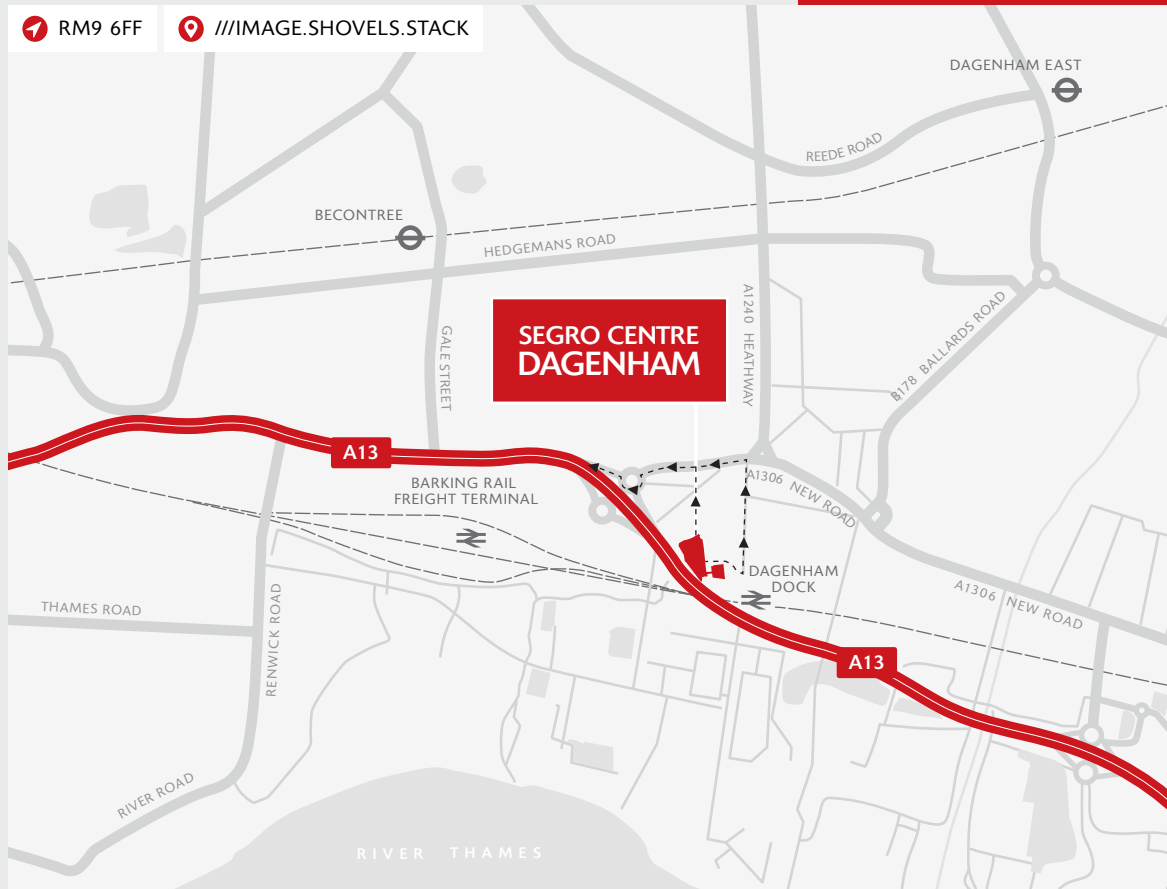
Dagenham Dock railway station (C2C) is within walking distance and provides a regular service into London Fenchurch street.



Computer generated image of SEGRO Centre Dagenham



# SEGRO CENTRE DAGENHAM



[SEGRO.COM/CENTREDAGENHAM](https://www.segro.com/centredagenham)

The content of this document is believed to be correct at the date of Publication. However, the Company and its retained agents accept no responsibility or liability for (or make any representation, statement or expression of opinion or warranty, express or implied, with respect to), the accuracy or completeness of the content of this document. If you would like to unsubscribe from future mailings, please contact [marcomms@SEGRO.com](mailto:marcomms@SEGRO.com). 11/24

## DISTANCES

A13	0.1 miles
A1306	0.1 miles
DAGENHAM DOCK ⇄	0.2 miles
LONDON CITY AIRPORT	7.1 miles
M25 (J31)	7.6 miles
A406	9.5 miles
CENTRAL LONDON	13.2 miles

Source: Google maps

## ABOUT SEGRO

SEGRO is a UK Real Estate Investment Trust (REIT), listed on the London Stock Exchange and Euronext Paris, and is a leading owner, manager and developer of modern warehouses and industrial property. It owns or manages 10.4 million square metres of space (112 million square feet) valued at £20.7 billion serving customers from a wide range of industry sectors. Its properties are located in and around major cities and at key transportation hubs in the UK and in seven other European countries.

See [SEGRO.com](https://www.segro.com) for further information.

## CONTACT

For more information, please contact one of our retained agents:



Natasha Ryan  
020 3151 0237

Dominic Whitfield  
020 3151 0226



Paul Londra  
020 3151 0342

Ed Thomason  
020 3151 0349

# SEGRO