

SEGRO Logistics Park East Midlands Gateway Phase 2 (EMG2)

Public Consultation

SEGRO is proposing to develop a second phase to East Midlands Gateway (EMG1) known as EMG2. The land within the second phase forms part of the East Midlands Freeport and will contribute towards economic growth in the East Midlands (including through job creation) and long-term sustainability benefits. The proposal includes the provision of much needed employment space as well as improvements to the existing rail freight terminal at EMG1.

EMG2 has been identified by the Secretary of State as a project of national significance for which an application will be made to the Secretary of State for a Development Consent Order (DCO) pursuant to the Planning Act 2008. Before the DCO application is submitted, SEGRO is required to consult stakeholders and the local community about its proposals. The purpose of this newsletter is to inform you about the consultation process and to invite you to provide your comments on EMG2.

Consultation on the proposals for EMG2 will commence on 3rd February 2025 and end on 17th March 2025.

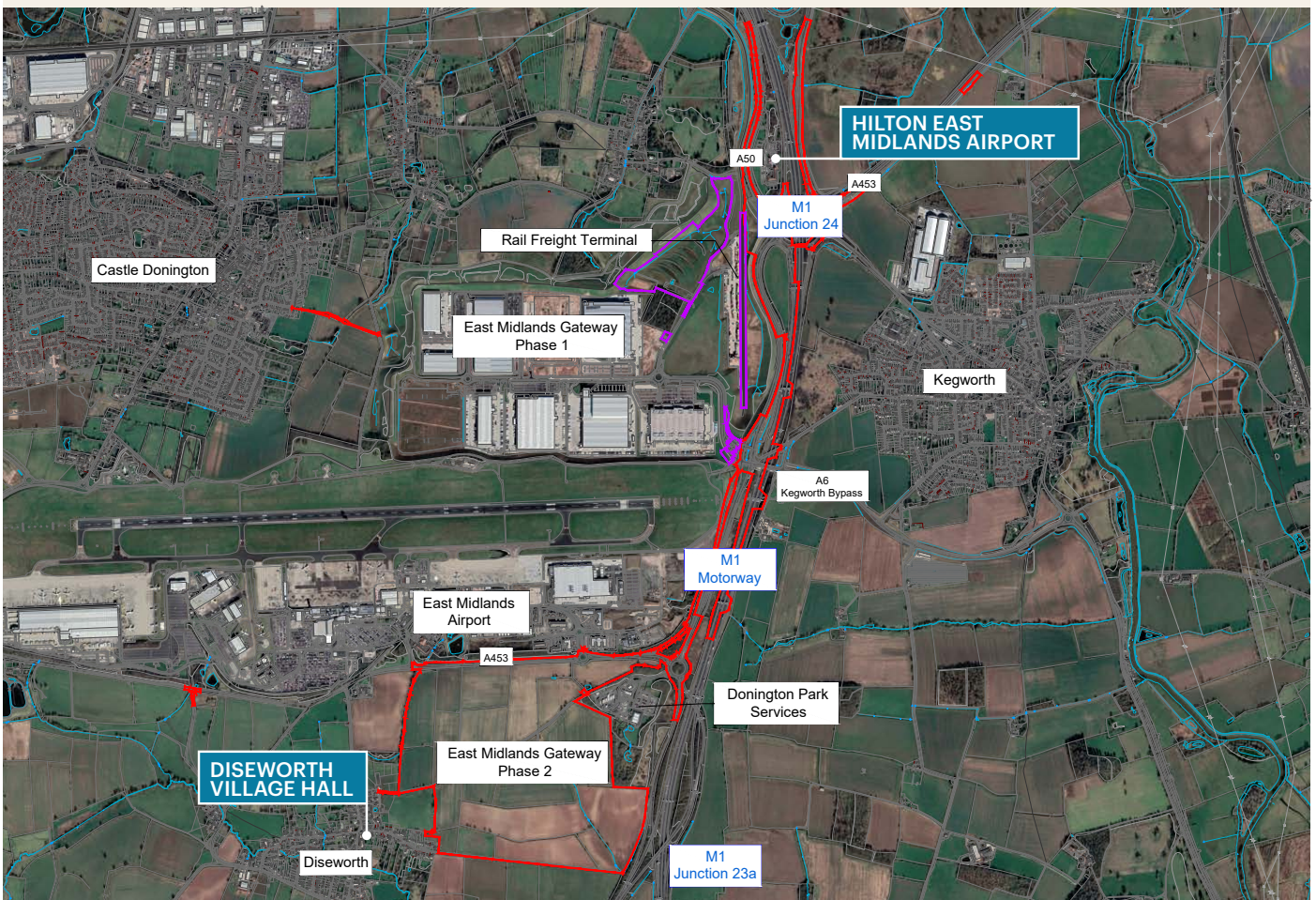
During the consultation period, more detailed information, including preliminary environmental information, about EMG2 will be provided on the project webpage – [//segro.com/slpemg2](https://segro.com/slpemg2) – and will be available to view at North West Leicestershire District Council’s Customer Service Centre, Belvoir Road, Coalville, Leicestershire LE67 3XF and at Castle Donington Library, 101 Bondgate, Castle Donington, Derbyshire DE74 2LJ. In addition, two public exhibitions will take place and an online webinar will be held on 4th March 2025. The dates and times for the exhibitions is set out below and further details about the webinar will be published on the project webpage in due course.

EXHIBITION 1

10th February 2025 · 3pm – 7pm
Diseworth Village Hall
Hall Gate, Diseworth, DE74 2QJ

EXHIBITION 2

25th February 2025 · 3pm – 7pm
Hilton East Midlands Airport
M1, Junction 24, Derby Rd, Derby DE74 2YZ



EMG2 LOCATION PLAN

The public exhibitions will include large-scale display boards containing information about the proposals, and members of the project team will be present to discuss the proposals and answer questions.



The proposals for EMG2 include the following key components:

- **Employment Floorspace:** Up to 325,000 sq m of employment space (including 300,000 sq m on EMG2 and 25,000 sq m within the existing EMG1), with an allowance for 105,000 sq m of additional mezzanine floors.
- **Bus Interchange Terminal:** A new bus terminal at the site entrance, replicating and building upon the sustainable travel strategy already in place at EMG1.
- **Landscaping and Biodiversity:** Extensive landscaping around site boundaries, incorporating both new and preserved natural features to enhance biodiversity. This will include a substantial landscape screen with earthworks bunding on the western and southern edges closest to Diseworth. Hyam's Lane will be retained to allow pedestrian and cyclist access through the site. Landscaping will include Sustainable Drainage Systems (SuDS).
- **Vehicular Access:** Direct from the A453, with new on-site road, walking and cycling infrastructure.
- **Highway Improvements:** Upgrades to the road network, including enhancements to Junction 24 of the M1 to increase traffic capacity and reduce congestion.
- **Rail Freight Terminal Enhancements:** Improvements to the existing EMG1 rail terminal to boost operational capacity and efficiency.



Consultation Process and Next Steps

The consultation will be undertaken in accordance with the Statement of Community Consultation (SoCC) for EMG2. A copy of the SoCC is available on the project webpage, at North West Leicestershire District Council's Customer Service

Centre and at Castle Donington Library. Consultation documents will be available from 3 February 2025 on the webpage and at these same locations.

Details about how to respond to the consultation are set out below.

After the consultation closes on 17th March 2025, SEGRO will review all feedback and have regard to it in finalising its DCO application. SEGRO expects to submit its DCO application to the Secretary of State for examination in late Spring 2025.

Comments on the proposals can be made by:

Completing the comments form available at each of the exhibitions

Post
EMG2
PO Box 11382
Nottingham
NG2 9AU

Online
via the 'contact us' page on:
segro.com/slpemg2

